



How to reach the Conference Site

The EMBL Advanced Training Centre is located on:

Meyerhofstrasse 1
D-69117 Heidelberg
Germany

It can be reached by public transport or by car.

1. By public transport

Find all info about public transport, a line plan as well as schedules and planner [here](#). A line plan is also attached at the end of the document in Figure 1.

By tram or bus:

A combination of tram/bus and shuttle bus is needed.

There are two tram lines and a bus line leading from the city of Heidelberg to a station close to EMBL:

Tram Line 23, coming from the inner part of the city (most common station: "Bismarckplatz", a square at the beginning of the pedestrian area). Schedules are given in the Figures Section of this document (Figure 5, Figure 6).

Tram Line 24, coming from the University Campus and connecting the Main Station. Schedules are given in the Figures Section of this document (Figure 7, Figure 8).

Bus Line 29, leaving "Bismarckplatz" in a circle. Schedules are given in the Figures Section of this document (Figure 9).

Please pay attention:

For all three lines: Take the direction to "Leimen" (Line 23) "Rohrbach-Süd" (Line 24) or "Emmertgrund" (Line 29).

Leave the tram or bus at the station "Rohrbach-Süd".

From this station, a bus shuttle will be provided by the organizers to reach the conference site. Schedules of the bus shuttle will be given very soon!



By bus:

A certain number of direct connections from station "Bismarckplatz" are available.

Bus Line 19F, linking "Bismarckplatz" in the morning and the afternoon directly with EMBL.

This is convenient for the conference in the morning (leaving "Bismarckplatz" at 8.33, arriving at "EMBL" at 8.49) and the evening (leaving "EMBL" at 18.11, arriving at "Bismarckplatz" at 18.27). Schedules are given in Figure 10.

2. By taxi

Taxi is convenient for all those who do not like to use public transport. From "Bismarckplatz", it is a 15-minutes-trip or more, depending on the traffic. Costs are about 25€.

3. By car

If you choose to have your private or a rental car, there are parking places on-site.

Address:

Meyerhofstraße 1
69117 Heidelberg, Germany

Coordinates for navigation device:

49.384055 8.710668

Directions:

From the inner city, please follow the road B3/L594 into direction of "Leimen". Turn right at Rohrbach-Süd and follow into direction Boxberg / Emmertsgrund. Drive up the hill, until you reach an "Aral" gas station, turn left here into the street Am Götzenberg.

The street will turnover into Boxberggring. After roughly 1 km, turn left into Zur Forstquelle, and follow the windy road for about 2 km. Turn right at the sign of EMBL into the

Meyerhofstrasse.

Please find a map in Figure 3.

How to reach the Conference Dinner

The Conference Dinner will take place on Tuesday, December 4, 2012, from about 20.00 to about 24.00, at [Halle 02](#).

Address:

Halle 02
Güteramtsstrasse 2
D-69115 Heidelberg

It is conveniently located in about 10 minutes walking distance from the Main Station.

Come to Main Station by public transports, and enter the station. Cross ALL TRACKS by the trackbridge, and leave the Main Station on the backside.

Turn left, and follow the road. It will bring you up to a traffic light at "Czernyring".

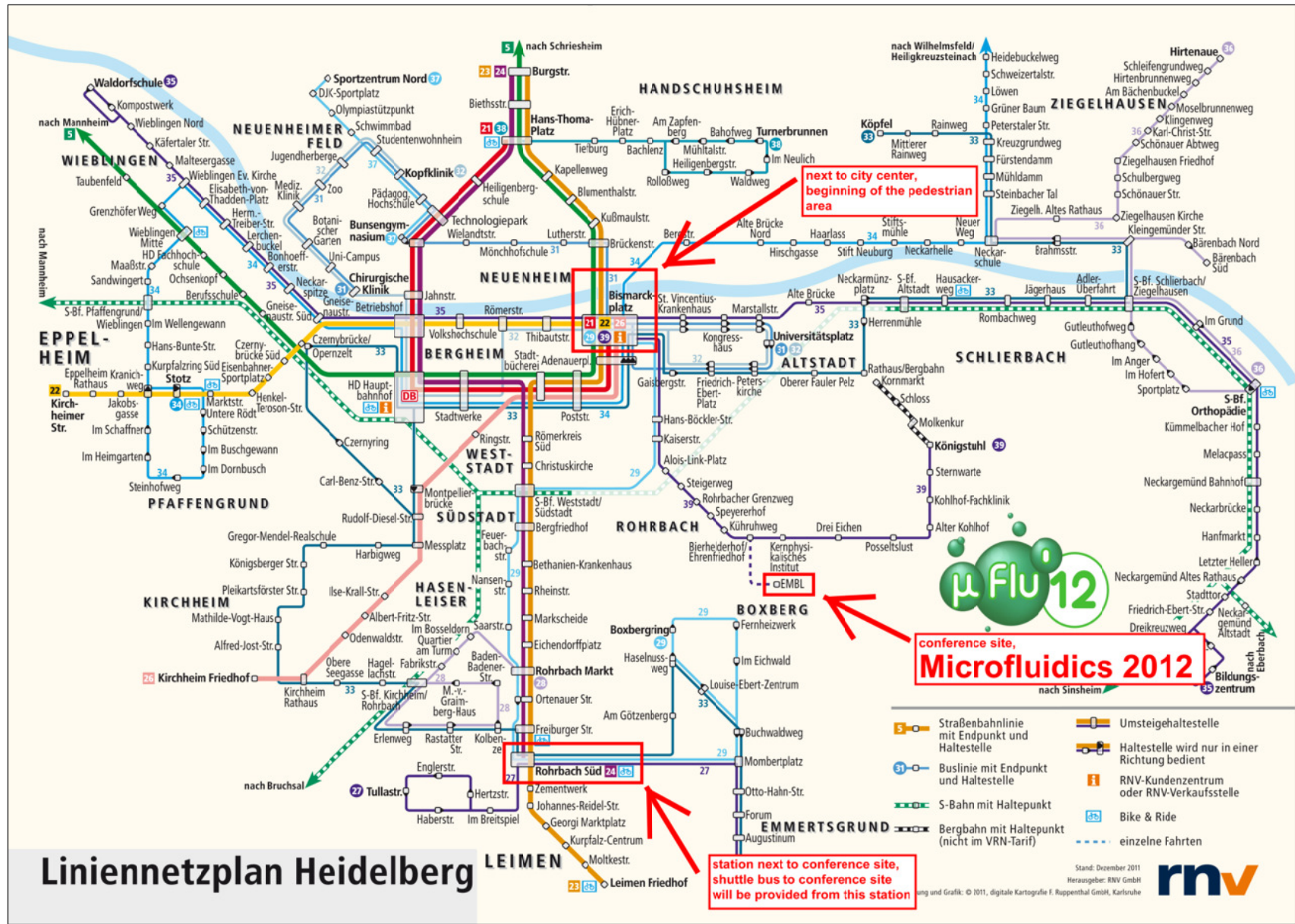
Cross the street, and follow the road "Güteramtsstrasse". After about 100m turn half-right and follow the road for another 50m. Entrance is to your right.

Please find a map at the Figure section of this document (Figure 4).

The Conference Dinner is a Gala Dinner. Appropriate dress is expected.



Figure 1: Heidelberg City Public Transport Line Plan



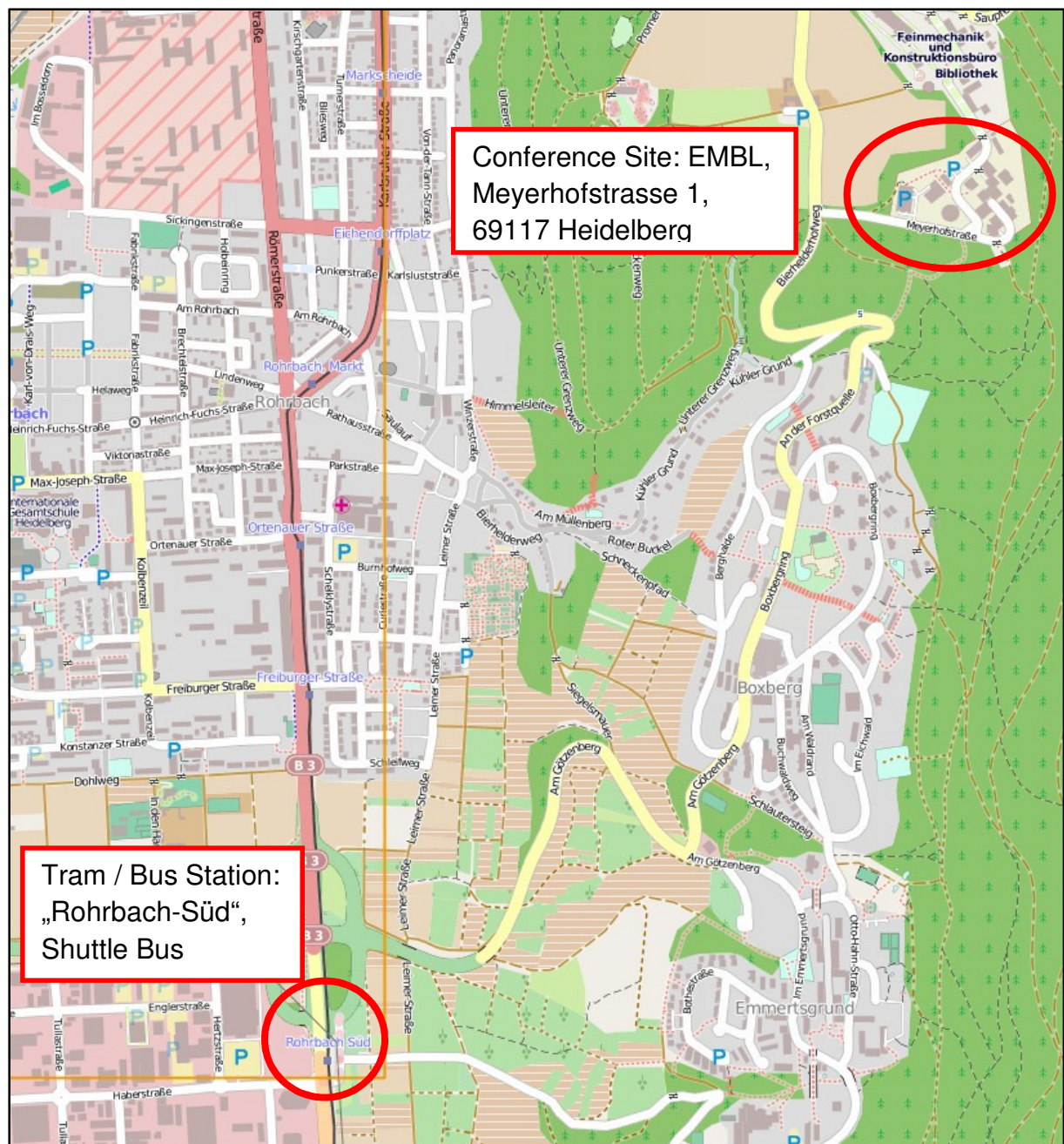


Figure 2: Tram Station and Conference Site

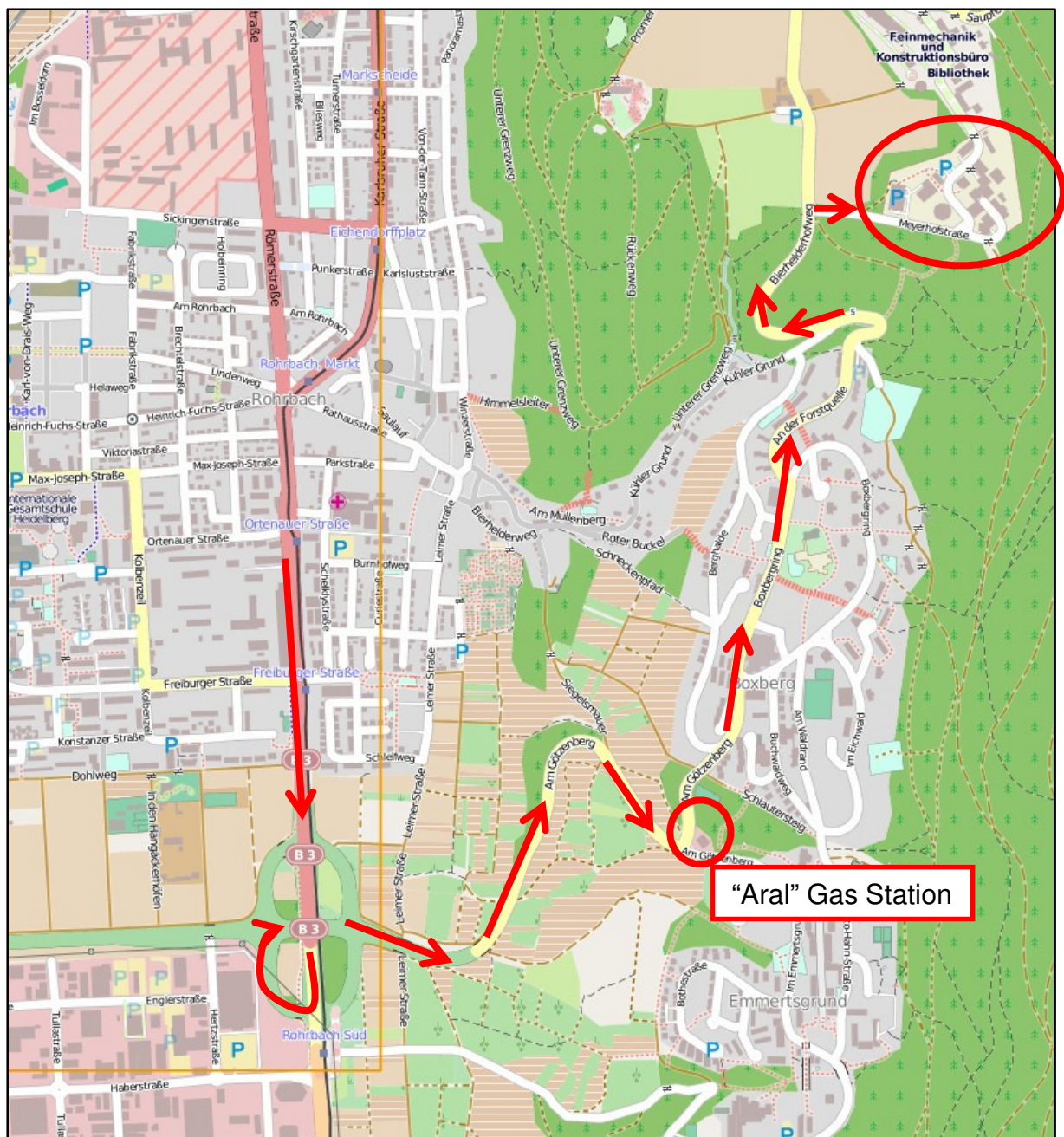


Figure 3: How to reach EMBL by car

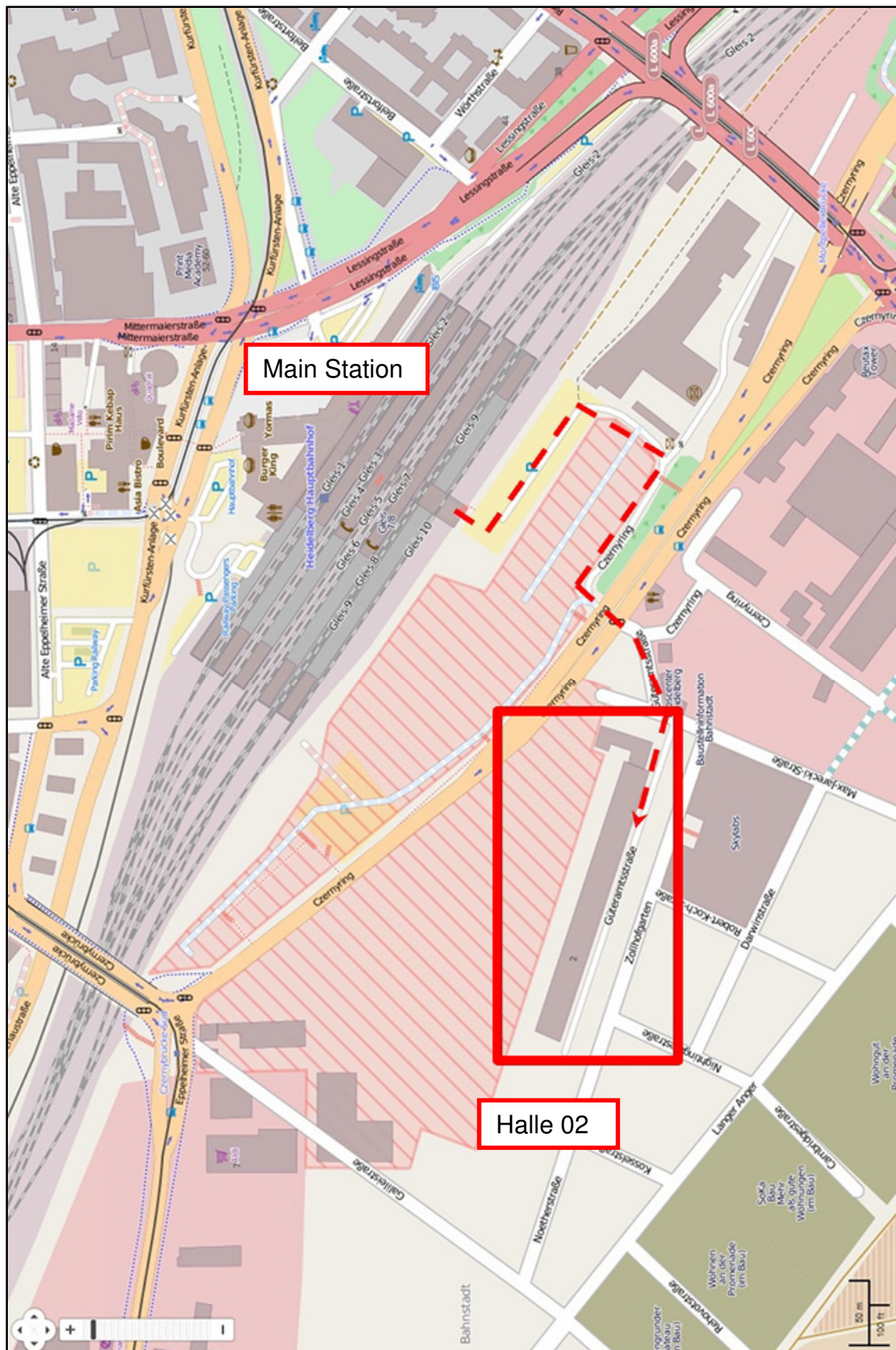


Figure 4: Conference Dinner Location Map “Halle 02”,
Address: Güteramtsstrasse 2, D-69115 Heidelberg, Germany

**23**

HD Handschuhsheim - HD Bismarckplatz - HD Rohrbach - Leimen

rnv

Alle Fahrten niederflurig

Timetable Tram / Trolley No.23 to Microfluidics2012 conference**ARRIVAL:**

From "Bismarckplatz" (city center, direction: "Leimen")
to "Rohrbach-Süd" station; (shuttle bus to confere
site starts from here)

interval of 10 minutes (every 10 minutes
from 7.13 to 20.23

		Montag - Freitag																		
Handschuhsheim, Burgstraße		5.23	5.43	6.03	6.13	6.23	6.33	6.43	6.53	7.03	alle 10 Min	20.13	20.23	20.28						
- Biethsstraße		5.24	5.44	6.04	6.14	6.24	6.34	6.44	6.54	7.04		20.14	20.24	20.29						
- Hans-Thoma-Platz		5.25	5.45	6.05	6.15	6.25	6.35	6.45	6.55	7.05		20.15	20.25	20.30						
- Kapellenweg		5.27	5.47	6.07	6.17	6.27	6.37	6.47	6.57	7.07		20.17	20.27	20.32						
Neuenheim, Blumenthalstraße		5.28	5.48	6.08	6.18	6.28	6.38	6.48	6.58	7.08		20.18	20.28	20.33						
- Kußmaulstraße		5.29	5.49	6.09	6.19	6.29	6.39	6.49	6.59	7.09		20.19	20.29	20.34						
Brückenstraße		5.30	5.50	6.10	6.20	6.30	6.40	6.50	7.00	7.10		20.20	20.30	20.35						
Heidelberg, Bismarckplatz	an	5.32	5.52	6.12	6.22	6.32	6.42	6.52	7.02	7.12		20.22	20.32							
Heidelberg, Bismarckplatz	ab	5.33	5.53	6.13	6.23	6.33	6.43	6.53	7.03	7.13		20.23	20.33	20.40						
- Adenauerplatz		5.34	5.54	6.14	6.24	6.34	6.44	6.54	7.04	7.14		20.24	20.34	20.41						
- Poststraße		5.35	5.55	6.15	6.25	6.35	6.45	6.55	7.05	7.15		20.25	20.35	20.42						
- Stadtbücherei		5.36	5.56	6.16	6.26	6.36	6.46	6.56	7.06	7.16		20.26	20.36	20.43						
- Römerkreis Süd	4.17	4.37	4.57	5.17	5.27	5.37	5.47	5.57	6.07	6.17	6.27	6.37	6.47	6.57	7.07	7.17	20.27	20.44		
- Christuskirche	4.18	4.38	4.58	5.18	5.28	5.38	5.48	5.58	6.08	6.18	6.28	6.38	6.48	6.58	7.08	7.18	20.28	20.45		
- S-Bf. West-/Südstadt	4.20	4.40	5.00	5.20	5.30	5.40	5.50	6.00	6.10	6.20	6.30	6.40	6.50	7.00	7.10	7.20	20.30	20.47		
- Bergfriedhof	4.21	4.41	5.01	5.21	5.31	5.41	5.51	6.01	6.11	6.21	6.31	6.41	6.51	7.01	7.11	7.21	20.31	20.48		
- Bethanien-Krankenhaus	4.22	4.42	5.02	5.22	5.32	5.42	5.52	6.02	6.12	6.22	6.32	6.42	6.52	7.02	7.12	7.22	20.32	20.49		
- Rheinstraße	4.23	4.43	5.03	5.23	5.33	5.43	5.53	6.03	6.13	6.23	6.33	6.43	6.53	7.03	7.13	7.23	20.33	20.50		
Rohrbach, Markscheide	4.24	4.44	5.04	5.24	5.34	5.44	5.54	6.04	6.14	6.24	6.34	6.44	6.54	7.04	7.14	7.24	20.34	20.51		
- Eichendorffplatz	4.25	4.45	5.05	5.25	5.35	5.45	5.55	6.05	6.15	6.25	6.35	6.45	6.55	7.05	7.15	7.25	20.35	20.52		
- Markt	4.26	4.46	5.06	5.26	5.36	5.46	5.56	6.06	6.16	6.26	6.36	6.46	6.56	7.06	7.16	7.26	20.36	20.53		
- Ortenauer Straße	4.27	4.47	5.07	5.27	5.37	5.47	5.57	6.07	6.17	6.27	6.37	6.47	6.57	7.07	7.17	7.27	20.37	20.54		
- Freiburger Straße	4.28	4.48	5.08	5.28	5.38	5.48	5.58	6.08	6.18	6.28	6.38	6.48	6.58	7.08	7.18	7.28	20.38	20.55		
- Süd	an	4.30	4.50	5.10	5.30	5.40	5.50	6.00	6.10	6.20	6.30	6.40	6.50	7.00	7.10	7.20	7.30	20.40	20.57	
- Süd	ab	4.32	4.52	5.12	5.32	5.42	5.52	6.02	6.12	6.22	6.32	6.42	6.52	7.02	7.12	7.22	7.32	20.42	20.58	
Leimen, Zementwerk	4.34	4.54	5.14	5.34	5.44	5.54	6.04	6.14	6.24	6.34	6.44	6.54	7.04	7.14	7.24	7.34	20.44	21.00		
- Johannes-Reidel-Straße	4.35	4.55	5.15	5.35	5.45	5.55	6.05	6.15	6.25	6.35	6.45	6.55	7.05	7.15	7.25	7.35	20.45	21.01		
- Georg-Marktplatz	4.37	4.57	5.17	5.37	5.47	5.57	6.07	6.17	6.27	6.37	6.47	6.57	7.07	7.17	7.27	7.37	20.47	21.03		
- Kurpfalz-Centrum	4.38	4.58	5.18	5.38	5.48	5.58	6.08	6.18	6.28	6.38	6.48	6.58	7.08	7.18	7.28	7.38	20.48	21.04		
- Moltkestraße	4.39	4.59	5.19	5.39	5.49	5.59	6.09	6.19	6.29	6.39	6.49	6.59	7.09	7.19	7.29	7.39	20.49	21.05		
- Friedhof	an	4.40	5.00	5.20	5.40	5.50	6.00	6.10	6.20	6.30	6.40	6.50	7.00	7.10	7.20	7.30	7.40	20.50	21.06	

		Montag - Freitag					
Handschuhsheim, Burgstraße							
- Biethsstraße							
- Hans-Thoma-Platz							
- Kapellenweg							
Neuenheim, Blumenthalstraße							
- Kußmaulstraße							
- Brückenstraße							
Heidelberg, Bismarckplatz an							
Heidelberg, Bismarckplatz ab	21.10	21.40	22.10	alle 30 Min	0.10		
- Adenauerplatz	21.11	21.41	22.11		0.11		
- Poststraße	21.12	21.42	22.12		0.12		
- Stadtbücherei	21.13	21.43	22.13		0.13		
- Römerkreis Süd	21.14	21.44	22.14		0.14		
- Christuskirche	21.15	21.45	22.15		0.15		
- S-Bf. West-/Südstadt	21.17	21.47	22.17		0.17		
- Bergfriedhof	21.18	21.48	22.18		0.18		
- Bethanien-Krankenhaus	21.19	21.49	22.19		0.19		
- Rheinstraße	21.20	21.50	22.20		0.20		
Rohrbach, Markscheide	21.21	21.51	22.21		0.21		
- Eichendorffplatz	21.22	21.52	22.22		0.22		
- Markt	21.23	21.53	22.23		0.23		
- Ortenauer Straße	21.24	21.54	22.24		0.24		
- Freiburger Straße	21.25	21.55	22.25		0.25		
- Süd an	21.27	21.57	22.27		0.27		
- Süd ab	21.28	21.58	22.28		0.28		
Leimen, Zementwerk	21.30	22.00	22.30		0.30		
- Johannes-Reidel-Straße	21.31	22.01	22.31		0.31		
- Georgi-Marktplatz	21.33	22.03	22.33		0.33		
- Kurpfalz-Centrum	21.34	22.04	22.34		0.34		
- Moltkestraße	21.35	22.05	22.35		0.35		
- Friedhof an	21.36	22.06	22.36		0.36		

interval of 30 minutes (every 30 minutes)
from 22.10 to 0.10

Figure 5: Schedule Tram Line 23, "ARRIVAL" to Microfluidics2012 Conference

**23**

Leimen - HD Rohrbach - HD Bismarckplatz - HD Handschuhsheim

rnv

Alle Fahrten niederflurig

RETURN:

From "Rohrbach-Süd" station
(final destination of shuttle bus from conference site)
to "Bismarckplatz" (city center)

interval of 10 minutes (every 10 minutes)
from 6.55 to 20.05

		Montag - Freitag															
		alle	10	Min	10	Min	10	Min	10	Min	10	Min	10	Min	10	Min	10
Leimen, Friedhof	ab	4.46	5.06	5.26	5.46	5.56	6.06	6.16	6.26	6.36	6.46	6.56	7.06	7.16	7.26	7.36	7.46
- Moltkestraße		4.47	5.07	5.27	5.47	5.57	6.07	6.17	6.27	6.37	6.47	6.57	7.07	7.17	7.27	7.37	7.47
- Kurpfalz-Centrum		4.48	5.08	5.28	5.48	5.58	6.08	6.18	6.28	6.38	6.48	6.58	7.08	7.18	7.28	7.38	7.48
- Georgi-Marktplatz		4.49	5.09	5.29	5.49	5.59	6.09	6.19	6.29	6.39	6.49	6.59	7.09	7.19	7.29	7.39	7.49
- Johannes-Reidel-Straße		4.51	5.11	5.31	5.51	6.01	6.11	6.21	6.31	6.41	6.51	7.01	7.11	7.21	7.31	7.41	7.51
- Zementwerk		4.52	5.12	5.32	5.52	6.02	6.12	6.22	6.32	6.42	6.52	7.02	7.12	7.22	7.32	7.42	7.52
Rohrbach, Süd	an	4.54	5.14	5.34	5.54	6.04	6.14	6.24	6.34	6.44	6.54	7.04	7.14	7.24	7.34	7.44	7.54
Rohrbach, Süd	ab	4.55	5.15	5.35	5.55	6.05	6.15	6.25	6.35	6.45	6.55	7.05	7.15	7.25	7.35	7.45	7.55
- Freiburger Straße		4.57	5.17	5.37	5.57	6.07	6.17	6.27	6.37	6.47	6.57	7.07	7.17	7.27	7.37	7.47	7.57
- Ortenauer Straße		4.58	5.18	5.38	5.58	6.08	6.18	6.28	6.38	6.48	6.58	7.08	7.18	7.28	7.38	7.48	7.58
- Markt		4.59	5.19	5.39	5.59	6.09	6.19	6.29	6.39	6.49	6.59	7.09	7.19	7.29	7.39	7.49	7.59
- Eichendorffplatz		5.00	5.20	5.40	6.00	6.10	6.20	6.30	6.40	6.50	7.00	7.10	7.20	7.30	7.40	7.50	8.00
- Markscheide		5.01	5.21	5.41	6.01	6.11	6.21	6.31	6.41	6.51	7.01	7.11	7.21	7.31	7.41	7.51	8.01
- Heidelberg, Rheinstraße		5.02	5.22	5.42	6.02	6.12	6.22	6.32	6.42	6.52	7.02	7.12	7.22	7.32	7.42	7.52	8.02
- Bethanien-Krankenhaus		5.03	5.23	5.43	6.03	6.13	6.23	6.33	6.43	6.53	7.03	7.13	7.23	7.33	7.43	7.53	8.03
- Bergfriedhof		5.04	5.24	5.44	6.04	6.14	6.24	6.34	6.44	6.54	7.04	7.14	7.24	7.34	7.44	7.54	8.04
- S-Bf. West-/Südost		5.05	5.25	5.45	6.05	6.15	6.25	6.35	6.45	6.55	7.05	7.15	7.25	7.35	7.45	7.55	8.05
- Christuskirche		5.07	5.27	5.47	6.07	6.17	6.27	6.37	6.47	6.57	7.07	7.17	7.27	7.37	7.47	7.57	8.07
- Römerkreis Süd		5.08	5.28	5.48	6.08	6.18	6.28	6.38	6.48	6.58	7.08	7.18	7.28	7.38	7.48	7.58	8.08
- Stadtbücherei		5.09	5.29	5.49	6.09	6.19	6.29	6.39	6.49	6.59	7.09	7.19	7.29	7.39	7.49	7.59	8.09
- Poststraße		5.10	5.30	5.50	6.10	6.20	6.30	6.40	6.50	7.00	7.10	7.20	7.30	7.40	7.50	8.00	8.10
- Adenauerplatz		5.11	5.31	5.51	6.11	6.21	6.31	6.41	6.51	7.01	7.11	7.21	7.31	7.41	7.51	8.01	8.11
Bismarckplatz	an	5.12	5.32	5.52	6.12	6.22	6.32	6.42	6.52	7.02	7.12	7.22	7.32	7.42	7.52	8.02	8.12
Bismarckplatz	ab	5.14	5.34	5.54	6.14	6.24	6.34	6.44	6.54	7.04	7.14	7.24	7.34	7.44	7.54	8.04	8.14
- Neuenheim, Brückenstraße		5.16	5.36	5.56	6.16	6.26	6.36	6.46	6.56	7.06	7.16	7.26	7.36	7.46	7.56	8.06	8.16
- Kußmaulstraße		5.17	5.37	5.57	6.17	6.27	6.37	6.47	6.57	7.07	7.17	7.27	7.37	7.47	7.57	8.07	8.17
- Blumenthalstraße		5.18	5.38	5.58	6.18	6.28	6.38	6.48	6.58	7.08	7.18	7.28	7.38	7.48	7.58	8.08	8.18
- Handschuhsheim, Kapellenweg		5.19	5.39	5.59	6.19	6.29	6.39	6.49	6.59	7.09	7.19	7.29	7.39	7.49	7.59	8.09	8.19
- Hans-Thoma-Platz		5.21	5.41	6.01	6.21	6.31	6.41	6.51	7.01	7.11	7.21	7.31	7.41	7.51	8.01	8.11	8.21
- Biethsstraße		5.22	5.42	6.02	6.22	6.32	6.42	6.52	7.02	7.12	7.22	7.32	7.42	7.52	8.02	8.12	8.22
- Burgstraße		5.23	5.43	6.03	6.23	6.33	6.43	6.53	7.03	7.13	7.23	7.33	7.43	7.53	8.03	8.13	8.23

Im Spätverkehr und Wochenendfrühverkehr verkehrt zwischen Handschuhsheim und Bismarckplatz nur die Linie 5.

Bitte beachten Sie daher auch die Fahrpläne der Linie 5.

		Montag - Freitag				
Leimen, Friedhof	ab	22.10	22.40	23.10	23.40	0.10
- Moltkestraße		22.11	22.41	23.11	23.41	0.11
- Kurpfalz-Centrum		22.12	22.42	23.12	23.42	0.12
- Georgi-Marktplatz		22.13	22.43	23.13	23.43	0.13
- Johannes-Reidel-Straße		22.15	22.45	23.15	23.45	0.15
- Zementwerk		22.16	22.46	23.16	23.46	0.16
Rohrbach, Süd	an	22.18	22.48	23.18	23.48	0.18
Rohrbach, Süd	ab	22.19	22.49	23.19	23.49	0.19
- Freiburger Straße		22.21	22.51	23.21	23.51	0.21
- Ortenauer Straße		22.22	22.52	23.22	23.52	0.22
- Markt		22.23	22.53	23.23	23.53	0.23
- Eichendorffplatz		22.24	22.54	23.24	23.54	0.24
- Markscheide		22.25	22.55	23.25	23.55	0.25
- Heidelberg, Rheinstraße		22.26	22.56	23.26	23.56	0.26
- Bethanien-Krankenhaus		22.27	22.57	23.27	23.57	0.27
- Bergfriedhof		22.28	22.58	23.28	23.58	0.28
- S-Bf. West-/Südost		22.29	22.59	23.29	23.59	0.29
- Christuskirche		22.31	23.01	23.31	0.01	0.31
- Römerkreis Süd		22.32	23.02	23.32	0.02	0.32
- Stadtbücherei		22.33	23.03	23.33	0.03	0.33
- Poststraße		22.34	23.04	23.34	0.04	0.34
- Adenauerplatz		22.36	23.06	23.36	0.06	0.36
Bismarckplatz	an	22.36	23.06	23.36	0.06	0.36
Bismarckplatz	ab					0.10
- Neuenheim, Brückenstraße						0.12
- Kußmaulstraße						0.13
- Blumenthalstraße						0.14
- Handschuhsheim, Kapellenweg						0.15
- Hans-Thoma-Platz						0.17
- Biethsstraße						0.18
- Burgstraße						0.19

Figure 6: Schedule Tram Line 23, "RETURN" to Heidelberg City Center



24

HD Handschuhsheim - Technologiepark - HD Hbf - Rohrbach Süd

rnv

Mindestens jede 2. Fahrt niederflurig

Timetable Tram / Trolley No.24 to Microfluidics2012 conference**ARRIVAL:**

From University Campus, (connecting Main Station)
to "Rohrbach-Süd" station; (shuttle bus to conferce
site starts from here)

interval of 10 minutes (every 10 minutes)

		Montag - Freitag																	
Handschuhsheim, Burgstraße					5.37	5.47	5.57	6.07	6.17	6.27	6.37	alle 10 Min	18.57	19.07	19.17	19.27	19.37	19.49	19.57
- Biethsstraße					5.38	5.48	5.58	6.08	6.18	6.28	6.38		18.58	19.08	19.18	19.28	19.38	19.50	19.58
- Hans-Thoma-Platz					5.39	5.49	5.59	6.09	6.19	6.29	6.39		18.59	19.09	19.19	19.29	19.39	19.51	19.59
- Heiligenbergschule					5.41	5.51	6.01	6.11	6.21	6.31	6.41		19.01	19.11	19.21	19.31	19.41	19.53	20.01
Neuenheim, Technologiepark					5.43	5.53	6.03	6.13	6.23	6.33	6.43		19.03	19.13	19.23	19.33	19.43	19.54	20.03
- Bunsengymnasium					5.44	5.54	6.04	6.14	6.24	6.34	6.44		19.04	19.14	19.24	19.34	19.44	19.55	20.04
- Jahnstraße					5.45	5.55	6.05	6.15	6.25	6.35	6.45		19.05	19.15	19.25	19.35	19.45	19.56	20.05
Heidelberg, Betriebshof	5.08	5.18	5.28	5.38	5.47	5.57	6.07	6.17	6.27	6.37	6.47		19.07	19.17	19.27	19.37	19.47	19.59	20.07
- Hauptbahnhof	an	5.09	5.19	5.29	5.39	5.49	5.59	6.09	6.19	6.29	6.39	6.49	19.09		19.29			20.00	20.30
- Hauptbahnhof	ab	5.10	5.20	5.30	5.40	5.50	6.00	6.10	6.20	6.30	6.40	6.50	19.10		19.30			20.01	20.31
- Stadtwerke		5.11	5.21	5.31	5.41	5.51	6.01	6.11	6.21	6.31	6.41	6.51	19.11		19.31			20.02	20.32
- Römerkreis Süd		5.12	5.22	5.32	5.42	5.52	6.02	6.12	6.22	6.32	6.42	6.52	19.12		19.32			20.03	20.33
- Christuskirche		5.13	5.23	5.33	5.43	5.53	6.03	6.13	6.23	6.33	6.43	6.53	19.13		19.33			20.04	20.34
- S-Bf. West-/Südstadt		5.15	5.25	5.35	5.45	5.55	6.05	6.15	6.25	6.35	6.45	6.55	19.15		19.35			20.06	20.36
- Bergfriedhof		5.16	5.26	5.36	5.46	5.56	6.06	6.16	6.26	6.36	6.46	6.56	19.16		19.36			20.07	20.37
- Bethanien-Krankenhaus		5.17	5.27	5.37	5.47	5.57	6.07	6.17	6.27	6.37	6.47	6.57	19.17		19.37			20.08	20.38
- Rheinstraße		5.18	5.28	5.38	5.48	5.58	6.08	6.18	6.28	6.38	6.48	6.58	19.18		19.38			20.09	20.39
- Rohrbach, Markscheide		5.19	5.29	5.39	5.49	5.59	6.09	6.19	6.29	6.39	6.49	6.59	19.19		19.39			20.10	20.40
- Eichendorffplatz		5.20	5.30	5.40	5.50	6.00	6.10	6.20	6.30	6.40	6.50	7.00	19.20		19.40			20.11	20.41
- Markt		5.21	5.31	5.41	5.51	6.01	6.11	6.21	6.31	6.41	6.51	7.01	19.21		19.41			20.12	20.42
- Ortenauer Straße		5.22	5.32	5.42	5.52	6.02	6.12	6.22	6.32	6.42	6.52	7.02	19.22		19.42			20.13	20.43
- Freiburger Straße		5.23	5.33	5.43	5.53	6.03	6.13	6.23	6.33	6.43	6.53	7.03	19.23		19.43			20.14	20.44
- Süd	an	5.25	5.35	5.45	5.55	6.05	6.15	6.25	6.35	6.45	6.55	7.05	19.25		19.45			20.16	20.46

		Montag - Freitag			
Handschuhsheim, Burgstraße					
- Biethsstraße		20.51	21.21	alle	23.21
- Hans-Thoma-Platz		20.53	21.23	30	23.23
- Heiligenbergschule		20.54	21.24	Min	23.24
Neuenheim, Technologiepark		20.55	21.25		23.25
- Bunsengymnasium		20.56	21.26		23.26
- Jahnstraße		20.59	21.29		23.29
Heidelberg, Betriebshof		21.00	21.30		23.30
- Hauptbahnhof	an	21.01	21.31		23.31
- Hauptbahnhof	ab	21.02	21.32		23.32
- Stadtwerke		21.03	21.33		23.33
- Römerkreis Süd		21.04	21.34		23.34
- Christuskirche		21.06	21.36		23.36
- S-Bf. West-/Südstadt		21.07	21.37		23.37
- Bergfriedhof		21.08	21.38		23.38
- Bethanien-Krankenhaus		21.09	21.39		23.39
- Rheinstraße		21.10	21.40		23.40
- Rohrbach, Markscheide		21.11	21.41		23.41
- Eichendorffplatz		21.12	21.42		23.42
- Markt		21.13	21.43		23.43
- Ortenauer Straße		21.14	21.44		23.44
- Freiburger Straße		21.16	21.46		23.46
- Süd	an	21.16	21.46		23.46

interval of 30 minutes (every 30 minutes)

Figure 7: Schedule Tram Line 24, "ARRIVAL" to Mircofluidics2012 Conference

**24****Rohrbach Süd - HD Hbf - Technologiepark - Handschuhsheim****rnv****RETURN:**

Mindestens jede 2. Fahrt niederflurig

From "Rohrbach-Süd" station; (final destination of shuttle bus from conference site)
to University Campus, (connecting Main Station)

		Montag - Freitag																	
Rohrbach, Süd	ab				5.30	5.40	5.50	6.00	6.10	6.20	6.30	6.40	6.50	7.00	7.10	7.20	7.30	7.40	
- Freiburger Straße					5.32	5.42	5.52	6.02	6.12	6.22	6.32	6.42	6.52	7.02	7.12	7.22	7.32	7.42	
- Ortenauer Straße					5.33	5.43	5.53	6.03	6.13	6.23	6.33	6.43	6.53	7.03	7.13	7.23	7.33	7.43	
- Markt					5.34	5.44	5.54	6.04	6.14	6.24	6.34	6.44	6.54	7.04	7.14	7.24	7.34	7.44	
- Eichendorffplatz					5.35	5.45	5.55	6.05	6.15	6.25	6.35	6.45	6.55	7.05	7.15	7.25	7.35	7.45	
- Markscheide					5.36	5.46	5.56	6.06	6.16	6.26	6.36	6.46	6.56	7.06	7.16	7.26	7.36	7.46	
Heidelberg, Rheinstraße					5.37	5.47	5.57	6.07	6.17	6.27	6.37	6.47	6.57	7.07	7.17	7.27	7.37	7.47	
- Bethanien-Krankenhaus					5.38	5.48	5.58	6.08	6.18	6.28	6.38	6.48	6.58	7.08	7.18	7.28	7.38	7.48	
- Bergfriedhof					5.39	5.49	5.59	6.09	6.19	6.29	6.39	6.49	6.59	7.09	7.19	7.29	7.39	7.49	
- S-Bf. West-/Südstadt					5.40	5.50	6.00	6.10	6.20	6.30	6.40	6.50	7.00	7.10	7.20	7.30	7.40	7.50	
- Christuskirche					5.42	5.52	6.02	6.12	6.22	6.32	6.42	6.52	7.02	7.12	7.22	7.32	7.42	7.52	
- Römerkreis Süd					5.43	5.53	6.03	6.13	6.23	6.33	6.43	6.53	7.03	7.13	7.23	7.33	7.43	7.53	
- Stadtwerke					5.44	5.54	6.04	6.14	6.24	6.34	6.44	6.54	7.04	7.14	7.24	7.34	7.44	7.54	
- Hauptbahnhof	an				5.45	5.55	6.05	6.15	6.25	6.35	6.45	6.55	7.05	7.15	7.25	7.35	7.45	7.55	
- Hauptbahnhof	ab				5.46	5.56	6.06	6.16	6.26	6.36	6.46	6.56	7.06	7.16	7.26	7.36	7.46	7.56	
- Betriebshof		4.58	5.18	5.28	5.38	5.48	5.58	6.08	6.18	6.28	6.38	6.48	6.58	7.08	7.18	7.28	7.38	7.48	7.58
- Neuenheim, Jahnstraße		5.00	5.20	5.30	5.40	5.50	6.00	6.10	6.20	6.30	6.40	6.50	7.00	7.10	7.20	7.30	7.40	7.50	8.00
- Bunsengymnasium		5.01	5.21	5.31	5.41	5.51	6.01	6.11	6.21	6.31	6.41	6.51	7.01	7.11	7.21	7.31	7.41	7.51	8.01
- Technologiepark		5.02	5.22	5.32	5.42	5.52	6.02	6.12	6.22	6.32	6.42	6.52	7.02	7.12	7.22	7.32	7.42	7.52	8.02
- Handschuh., Heiligenbergschule		5.04	5.24	5.34	5.44	5.54	6.04	6.14	6.24	6.34	6.44	6.54	7.04	7.14	7.24	7.34	7.44	7.54	8.04
- Hans-Thoma-Platz		5.06	5.26	5.36	5.46	5.56	6.06	6.16	6.26	6.36	6.46	6.56	7.06	7.16	7.26	7.36	7.46	7.56	8.06
- Biethstraße		5.07	5.27	5.37	5.47	5.57	6.07	6.17	6.27	6.37	6.47	6.57	7.07	7.17	7.27	7.37	7.47	7.57	8.07
- Burgstraße		5.08	5.28	5.38	5.48	5.58	6.08	6.18	6.28	6.38	6.48	6.58	7.08	7.18	7.28	7.38	7.48	7.58	8.08

		Montag - Freitag															
Rohrbach, Süd	ab	7.50	alle	19.20	19.30	19.50	20.20	20.50	alle	23.20	23.50						
- Freiburger Straße		7.52	10	19.22	19.32	19.52	20.22	20.52	30	23.22	23.52						
- Ortenauer Straße		7.53	Min	19.23	19.33	19.53	20.23	20.53	Min	23.23	23.53						
- Markt		7.54		19.24	19.34	19.54	20.24	20.54		23.24	23.54						
- Eichendorffplatz		7.55		19.25	19.35	19.55	20.25	20.55		23.25	23.55						
- Markscheide		7.56		19.26	19.36	19.56	20.26	20.56		23.26	23.56						
- Heidelberg, Rheinstraße		7.57		19.27	19.37	19.57	20.27	20.57		23.27	23.57						
- Bethanien-Krankenhaus		7.58		19.28	19.38	19.58	20.28	20.58		23.28	23.58						
- Bergfriedhof		7.59		19.29	19.39	19.59	20.29	20.59		23.29	23.59						
- S-Bf. West-/Südstadt		8.00		19.30	19.40	20.00	20.30	21.00		23.30	0.00						
- Christuskirche		8.02		19.32	19.42	20.02	20.32	21.02		23.32	0.02						
- Römerkreis Süd		8.03		19.33	19.43	20.04	20.34	21.04		23.34	0.03						
- Stadtwerke		8.04		19.34	19.44	20.05	20.35	21.05		23.35	0.04						
- Hauptbahnhof	an	8.05		19.35	19.45	20.06	20.36	21.06		23.36	0.05						
- Hauptbahnhof	ab	8.06		19.36	19.46	20.07	20.37	21.07		23.37	0.06						
- Betriebshof		8.08		19.38	19.47	20.08	20.38	21.08		23.38	0.07						
- Neuenheim, Jahnstraße		8.10		19.40		20.10	20.40	21.10		23.40							
- Bunsengymnasium		8.11		19.41		20.11	20.41	21.11		23.41							
- Technologiepark		8.12		19.42		20.12	20.42	21.12		23.42							
- Handschuh., Heiligenbergschule		8.14		19.44		20.13	20.43	21.13		23.43							
- Hans-Thoma-Platz		8.16		19.46		20.15	20.45	21.15		23.45							
- Biethsstraße		8.17		19.47													
- Burgstraße		8.18		19.48													

interval of 10 minutes (every 10 minutes)

interval of 30 minutes (every 30 minutes)

Figure 8: Schedule Tram Line 24, "RETRURN" University Campus

Timetable Bus No.29 to Microfluidics2012 conference

Montag - Freitag														
Hinweise	an	ab	an	ab	an	ab	an	ab	an	ab	an	ab	an	ab
Heidelberg, Bismarckplatz			5.36	5.56	6.16	6.36	alle	19.56	20.16					
- Hans-Böckler-Straße			5.39	5.59	6.19	6.39	20	19.59	20.19					
- Kaiserstraße			5.40	6.00	6.20	6.40		20.00	20.20					
- S-Bf. West-/Südstadt			5.41	6.01	6.21	6.41		20.01	20.21					
- Bergfriedhof			5.42	6.02	6.22	6.42		20.02	20.22					
- Feuerbachstraße			5.43	6.03	6.23	6.43		20.03	20.23					
- Nansenstraße			5.45	6.05	6.25	6.45		20.05	20.25					
Rohrbach, Saarstraße			5.46	6.06	6.26	6.46		20.06	20.26					
- Markt			5.48	6.08	6.28	6.48		20.08	20.28					
- Ordener Straße			5.49	6.09	6.29	6.49		20.09	20.29					
- Süd	an		5.52	6.12	6.32	6.52		20.12	20.32					
- Süd	ab	4.43	5.03	5.53	6.13	6.33	6.53	20.13	20.33	21.00	21.30	22.00	alle	0.30
Emmertgrund, Mombertplatz			5.57	6.17	6.37	6.57		20.17	20.37	21.04	21.34	22.04	30	0.34
Boxberg, Louise-Ebert-Zentrum			5.58	6.18	6.38	6.58		20.18	20.38	21.05	21.35	22.05	Min	0.35
- Haselnußweg	4.48	5.08	5.59	6.19	6.39	6.59		20.19	20.39	21.06	21.36	22.06		0.36
- Boxberggring	4.50	5.10	6.00	6.20	6.40	7.00		20.20	20.40	21.07	21.37	22.07		0.37
- Fernheizwerk	4.52	5.12	6.02	6.22	6.42	7.02		20.22	20.42	21.09	21.39	22.09		0.39
- Im Eichwald			6.03	6.23	6.43	7.03		20.23	20.43	21.10	21.40	22.10		0.40
- Buchwaldweg	4.54	5.14	6.04	6.24	6.44	7.04		20.24	20.44	21.11	21.41	22.11		0.41
Emmertgrund, Mombertplatz	4.56	5.16	6.06	6.26	6.46	7.06		20.26	20.46	21.12	21.42	22.12		0.42
Rohrbach, Süd	5.14	5.34	6.09	6.29	6.49	7.09		20.29	20.49	21.16	21.46	22.16		0.46
- Markt	ab		6.13	6.33	6.53	7.13		20.33						
- Saarstraße			6.15	6.35	6.55	7.15		20.35						
- Nansenstraße			6.16	6.36	6.56	7.16		20.36						
- Feuerbachstraße			6.17	6.37	6.57	7.17		20.37						
- Bergfriedhof			6.19	6.39	6.59	7.19		20.39						
- S-Bf. West-/Südstadt			6.20	6.40	7.00	7.20		20.40						
- Kaiserstraße			6.21	6.41	7.01	7.21		20.41						
- Hans-Böckler-Straße			6.22	6.42	7.02	7.22		20.42						
- Bismarckplatz	an		6.25	6.45	7.05	7.25		20.45						

Figure 9: Schedule Bus Line 29 “ARRIVAL” and “RETURN”

19

**Schnellbusverkehr: Rohrbach Süd - Neuenheim
Linien F und K und zurück**

Timetable Bus No.19F to Microfluidics2012 conference

Linie F, K

ARRIVAL:
From "Bismarckplatz" (city center)
to conference site "Heidelberg, EMBL"

Hinweise	F	K	F	K	F	K
Heidelberg, Bismarckplatz	6.33	7.33	8.33	9.33	10.03	
- Hans-Böckler-Straße	6.36	7.36	8.36	9.36	10.06	
- Kaiserstraße	6.37	7.37	8.37	9.37	10.07	
- Alois-Link-Platz	6.38	7.38	8.38	9.38	10.08	
- Steigweg	6.40	7.40	8.40	9.40	10.10	
- Rohrbacher Grenzweg	6.43	7.43	8.43	9.43	10.13	
- Kühnweg	6.45	7.45	8.45	9.45	10.15	
- Bierfelderhof/Ehrenfriedhof	6.49	7.49	8.49	9.49	10.19	
- EMBL	6.53	7.53				
Boxberg, Boxberggring						

RETURN:
From conference site "Heidelberg, EMBL"
back to "Bismarckplatz" (city center)

Beschränkungen	F	K	F	K	F	K
Rohrbach, Süd	7.00	7.12	16.00	17.00	18.00	
Emmertgrund, Endstelle	7.01					
- Jaspersstraße	7.02					
- Augustinum	7.03					
- Forum	7.04					
- Otto-Hahn-Straße	7.05	7.16	16.04	17.04	18.04	
Mombertplatz	7.06	7.17	16.05	17.05	18.05	
Boxberg, Louise-Ebert-Zentrum	7.07	7.18	16.06	17.06	18.06	
- Haselnußweg	7.08	7.19	16.07	17.07	18.07	
Boxberggring	7.13		14.11	16.11	17.11	18.11
Heidelberg, EMBL	7.15	7.26	14.13	16.13	17.13	18.13
- Bierfelderhof/Ehrenfriedhof	7.16	7.27	14.14	16.14	17.14	18.14
- Kühnweg	7.18	7.29	14.16	16.16	17.16	18.16
- Rohrbacher Grenzweg	7.19	7.30	14.17	16.17	17.17	18.17
- Steigweg	7.21	7.32	14.19	16.19	17.19	18.19
- Alois-Link-Platz	7.22	7.33	14.21	16.21	17.21	18.21
- Kaiserstraße	7.23	7.34	14.22	16.22	17.22	18.22
- Hans-Böckler-Straße	7.25	7.36	14.24	16.24	17.24	18.24
Bismarckplatz	7.26	7.37	14.25	16.25	17.25	18.25
Neuenheim, Brückenstraße	7.28		14.27	16.27	17.27	18.27
- Lutherstraße	7.29					
- Mönchhofschule	7.30					
- Bunsengymnasium	7.40					
- Technologiepark	7.41					

ZEICHENERKLÄRUNG: F= Linie F K= Linie K S= nur an Schultagen
 ◀ = Hält nur zum Aussteigen ▶ = Hält nur zum Einsteigen

Figure 10: Schedule Bus Line 19F